



US 550, NM 313 to NM 528 Public Information Meeting February 18, 2016

Presentation Outline

- ▲ Introductions
- ▲ Environmental Process
- ▲ US 550 Alternatives Analysis
- ▲ Next Projects



Schedule

- ▲ Final Phase I-B Report – February 2016
- ▲ Corridor Draft Environmental Document – April 2016
- ▲ Access Management Study – April 2016
- ▲ Preliminary Design of entire corridor– May 2016



ENVIRONMENTAL PROCESS

Purpose and Need

- ▲ US 550 must continue to function for local, commuter, and regional traffic.
- ▲ Improved capacity is needed for the 2035 projected traffic and to enhance the economic development potential in the Town of Bernalillo, Santa Ana Pueblo, Rio Rancho, and the communities in northwest New Mexico.
- ▲ Pavement has reached it's design life and needs reconstruction.
- ▲ Facilities are needed for bicycles and pedestrians.

National Environmental Policy Act (NEPA)



Environmental Steps

- Data Collection
- Field Work
- Alternative Evaluation
- Mitigation Measures
- Public involvement
- Environmental document –
Categorical Exclusion
- Decision
- Proceed with final design
and construction



Categorical Exclusion - CE

NM 313 to NM 528

- ★ US 550 from NM 313 to NM 528
- ★ Phase I – Bridge Reconstruction
- ★ Based on Phase B Location Study Report





US 550 ALTERNATIVES ANALYSIS

Desirable Outcomes

- ▲ Less congestion
- ▲ Enhanced safety, less conflicts
- ▲ Meets State's criteria for access
- ▲ Sidewalks
- ▲ Bike Lanes

Phase 1-A

Initial Analysis of Alternatives

▲ US 550 Alternatives

- No Build
- Six Lane with Median
- Eight Lane with Median
- Six Lane Super Street
- Six Lane with Reversible Lane
- Double Decker Freeway

Phase 1-A

Initial Analysis of Alternatives

▲ NM 528 Options

- No Build
- Eight lanes, triple lefts
- Super Street
- Continuous Flow
- Diamond Interchange
- Flyover

Phase A Public Involvement

- ▲ Stakeholder Meeting, Sept. 5, 2013
- ▲ Two Business Owner Meetings, Sept. 26, 2013
- ▲ Public Information Meeting Nov. 7, 2013
- ▲ Stakeholder Meeting, May 7, 2014

Phase 1-B

Detailed Analysis of Alternatives

▲ US 550 Alternatives

- No Build
- Six Lane with Median
- ~~Eight Lane with Median~~
- Six Lane Super Street
- Six Lane with Reversible Lane
- ~~Double Decker Freeway~~

Phase 1-B

Detailed Analysis of Alternatives

▲ NM 528 Options

- No Build
- ~~Eight lanes, triple lefts~~
- Super Street
- Continuous Flow
- ~~Diamond Interchange~~
- Flyover

Phase 1-B Public Involvement

- ▲ Town of Bernalillo Stakeholder Meetings, Nov. 6, 2015, Dec. 14, 2015, Jan 7, 2016
- ▲ Santa Ana Stakeholder Meetings, April 27, 2015, Nov 12, 2015
- ▲ Local Agency Stakeholder Meeting, Nov. 18, 2015
- ▲ Public Information Meeting, Dec. 17, 2015

Phase 1-B

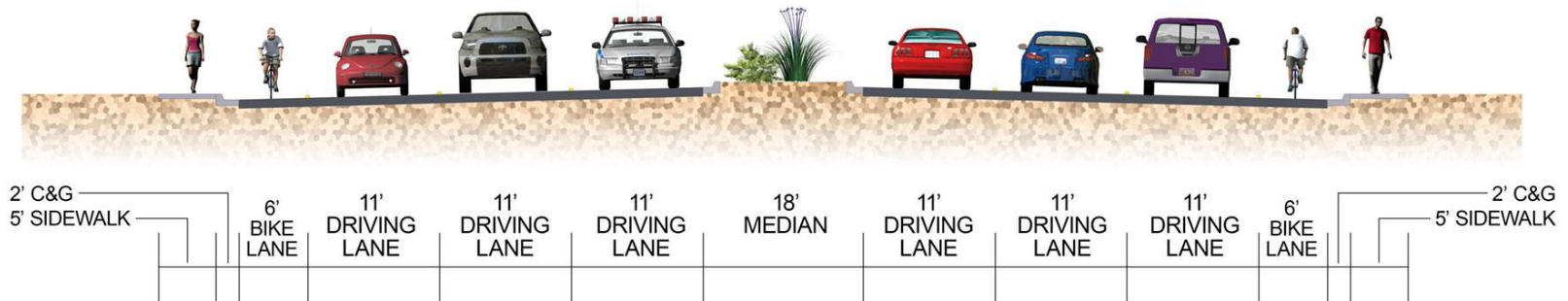
Detailed Analysis of Alternatives

▲ US 550 Alternatives

- ~~– No Build~~
- Six Lane with Median
- ~~– Eight Lane with Median~~
- Six Lane Super Street
- ~~– Six Lane with Reversible Lane~~
- ~~– Double Decker Freeway~~

Six Lane with Raised Medians East of the Rio Grande

6 LANE - TYPICAL SECTION



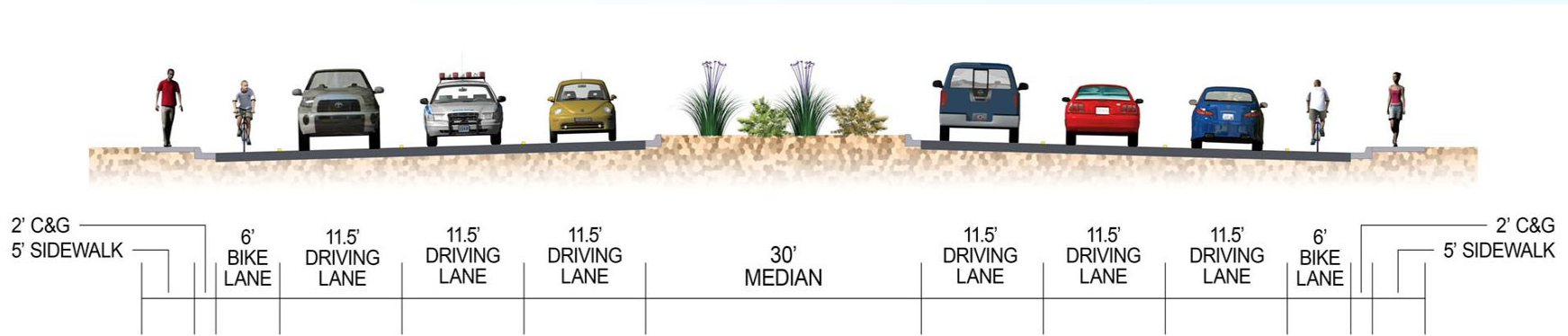
Six Lane with Raised Medians



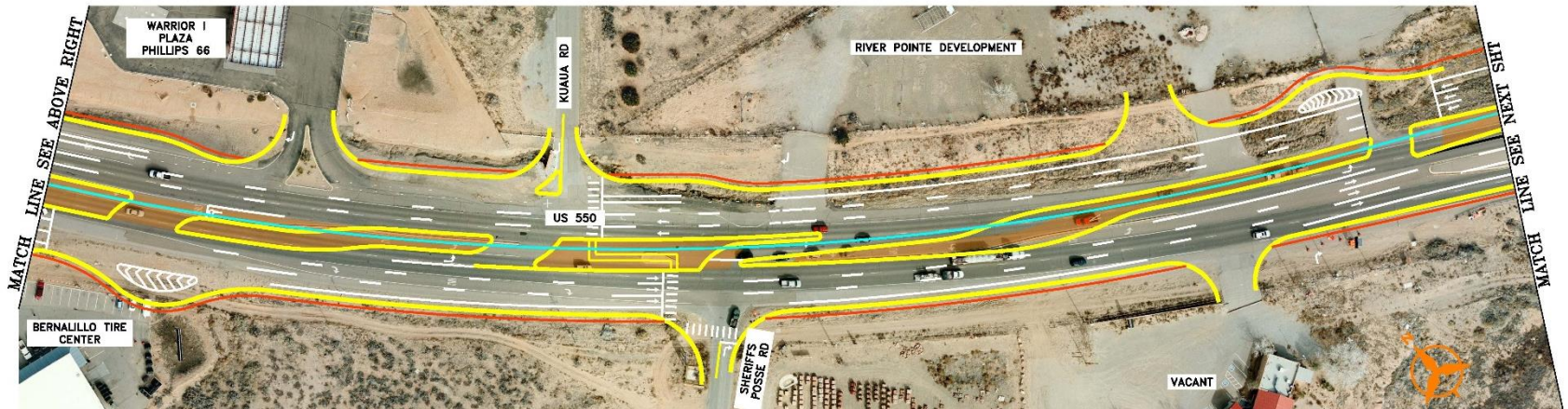
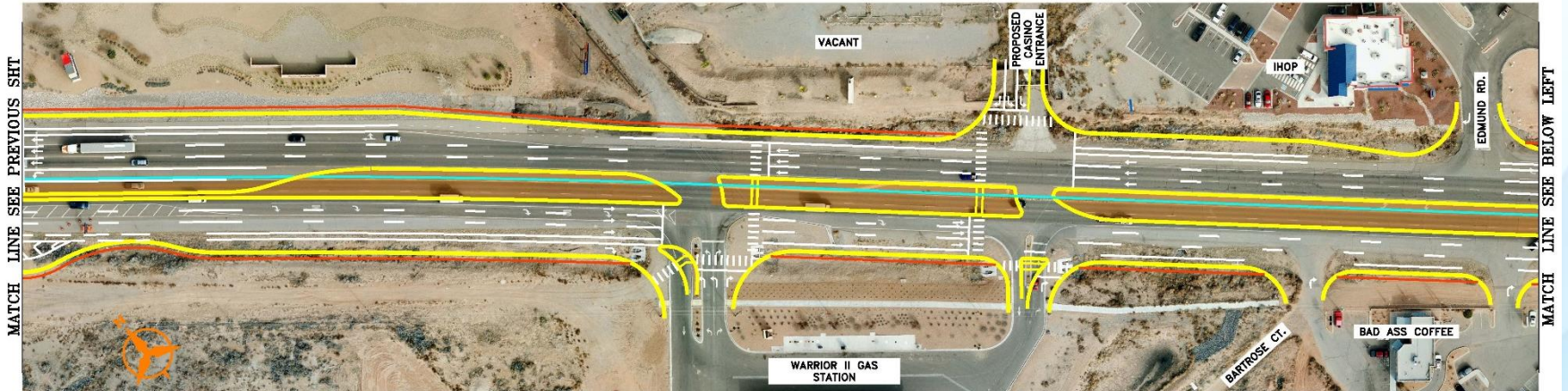
Six Lane with Raised Median



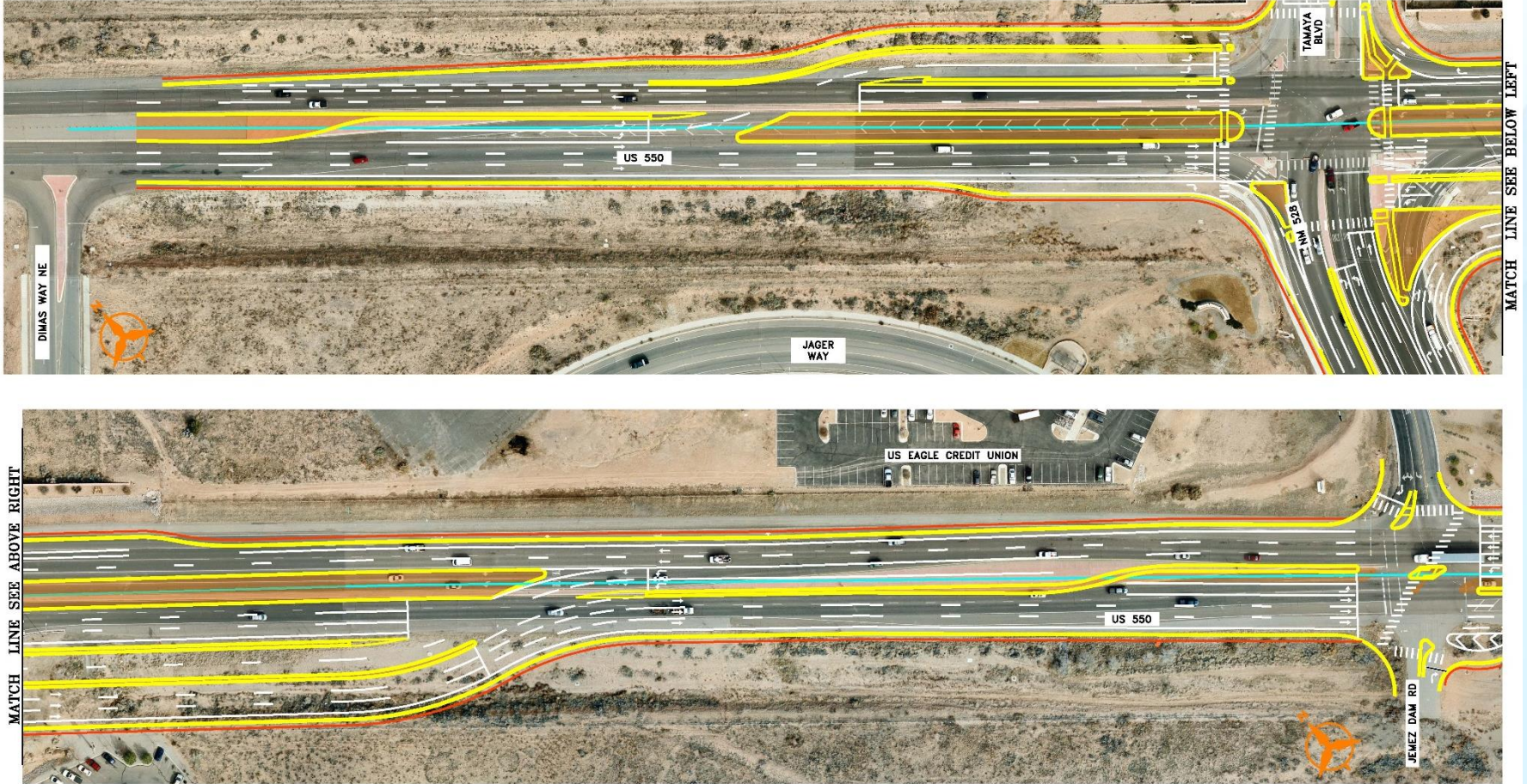
Super Street west of the Rio Grande



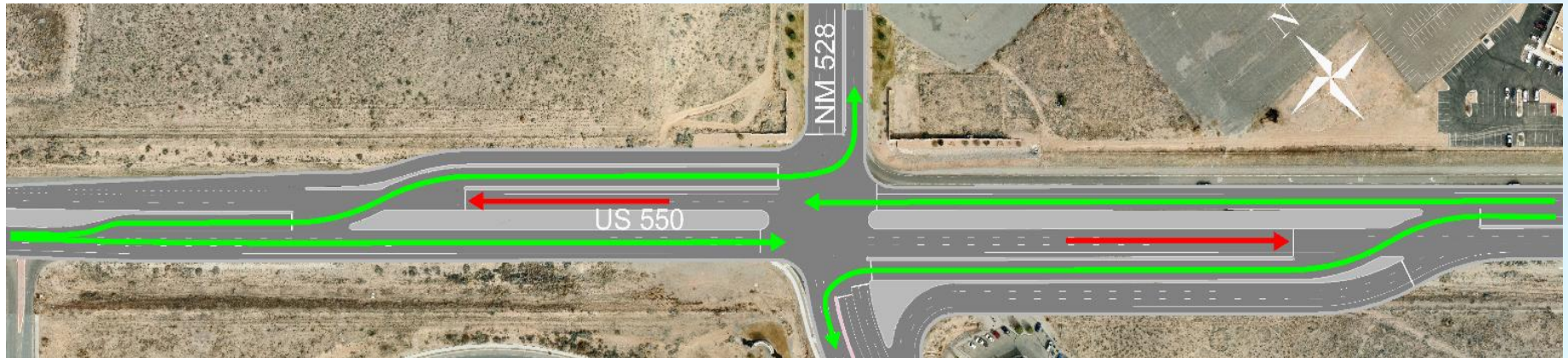
Super Street



Super Street



Continuous Flow Intersection



Level of Service Definition

LOS	Signalized Intersection	Unsignalized Intersection
A	≤ 10 sec	≤ 10 sec
B	10–20 sec	10–15 sec
C	20–35 sec	15–25 sec
D	35–55 sec	25–35 sec
E	55–80 sec	35–50 sec
F	≥ 80 sec	≥ 50 sec

2035 Level of Service (LOS)

Location	AM Peak Delay (sec)	AM Peak LOS	PM Peak Delay (sec)	PM Peak LOS
NM 528	34.41	C	44.26	D
Jemez Dam	27.38	C	19.23	B
New Santa Ana Star Entrance	4.05	A	12.57	B
Kuaua / Sheriff's Posse	5.07	A	9.75	A
Santa Ana	17.69	B	4.97	A
Camino Don Tomas	32.23	C	28.80	C
Camino del Pueblo	31.30	C	34.93	C

Reasons for selecting preferred alternative

- ▲ Reduces travel times and network delay
- ▲ Reduces conflicts for improved safety
- ▲ Improves pedestrian and bicycle facilities
- ▲ Meets state's criteria for access management



PREFERRED ALTERNATIVE SIMULATIONS

NM 528 CONTINUOUS FLOW INTERSECTION SIMULATION

Next Projects

- ▲ Build new Westbound Bridge over the Rio Grande and third through lane from the bridge to Jemez Dam Road
- ▲ Purchase Right-of-way east of Rio Grande

